

**CORRECTED SPECIAL DISTRICT PUBLIC DISCLOSURE DOCUMENT**

**UPLANDS METROPOLITAN DISTRICT NO. 1**

As required pursuant to Section 32-1-104.8 of the Colorado Revised Statutes (“**C.R.S.**”), Uplands Metropolitan District No. 1 (“**District**”) recorded its Public Disclosure Document on December 2, 2022 in the real property records of Adams County at Reception Number 202200094536 (“**Public Disclosure Document**”).

It has been discovered that Exhibit A to the Special District Public Disclosure Document, the map of the District’s boundaries, was incorrect. This Corrected Special District Public Disclosure Document is being recorded to correct **Exhibit A** to the Special District Public Disclosure Document.

**DISTRICT’S POWERS**

The powers of the District as authorized by Section 32-1-1004, C.R.S., and under its Service Plan, as approved by City Council of the City of Westminster (“**City**”) on September 12, 2022, are to plan for, design, finance, acquire, construct, install, relocate, redevelop, and provide for certain public improvements and services, including, but not limited to, water, streets, sanitary sewer, parks and recreation, and safety protection improvements, as well as any and all services necessary or incidental to the provision of such public improvements and services.

**DISTRICT’S SERVICE PLAN**

The District’s Service Plan, which can be amended from time to time, includes a description of the District’s powers and authority. A copy of the District’s Service Plan is available from the Division of Local Government in the State Department of Local Affairs (“**Division**”).

The Uplands Metropolitan District No. 1 is authorized by Title 32 of the Colorado Revised Statutes to use a number of methods to raise revenues for capital needs and general operations costs. These methods, subject to the limitations imposed by Section 20 of Article X of the Colorado Constitution (“**TABOR**”), include issuing debt, levying taxes, and imposing fees and charges. Information concerning District directors, management, meetings, elections, and current taxes are provided annually in the Notice to Electors described in Section 32-1-809(1), C.R.S., which can be found at the District office, on the District's website, on file at the Division, or on file at the office of the Clerk and Recorder of Adams County.

**DISTRICT MAP**

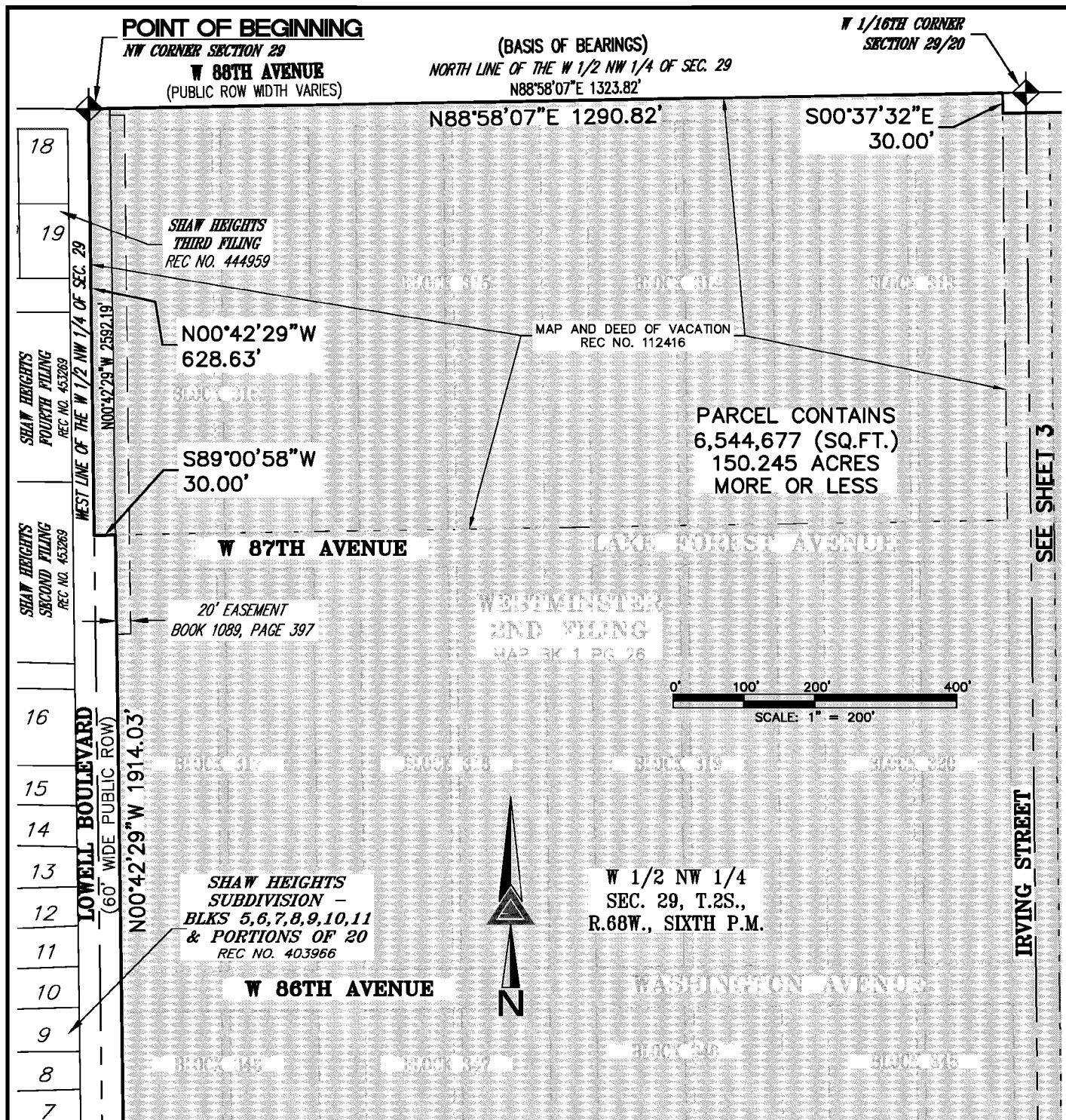
A corrected map of the District’s boundaries is attached hereto as **Exhibit A**.

Dated this 25<sup>th</sup> day of August, 2023.

**EXHIBIT 1**

Corrected District Map

# Upland Metropolitan District No. 1 Boundary Map



**SEE SHEET 5**

NOTE: THIS DRAWING DOES NOT REPRESENT A MONUMENTED LAND SURVEY AND IS ONLY INTENDED TO DEPICT THE ATTACHED LEGAL DESCRIPTION.

PATH: Q:178722-01\DWG\EXHIBITS\  
DWG NAME: DISTRICT PARCEL 1  
DWG: AMB CHK: JRW  
DATE: 08/02/2022  
SCALE: 1" = 200'

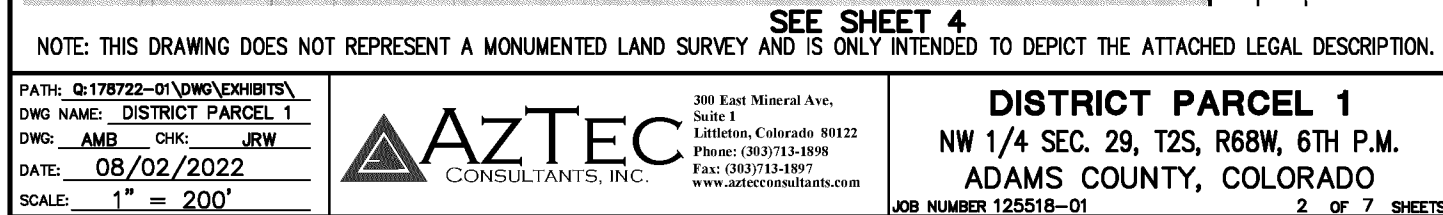


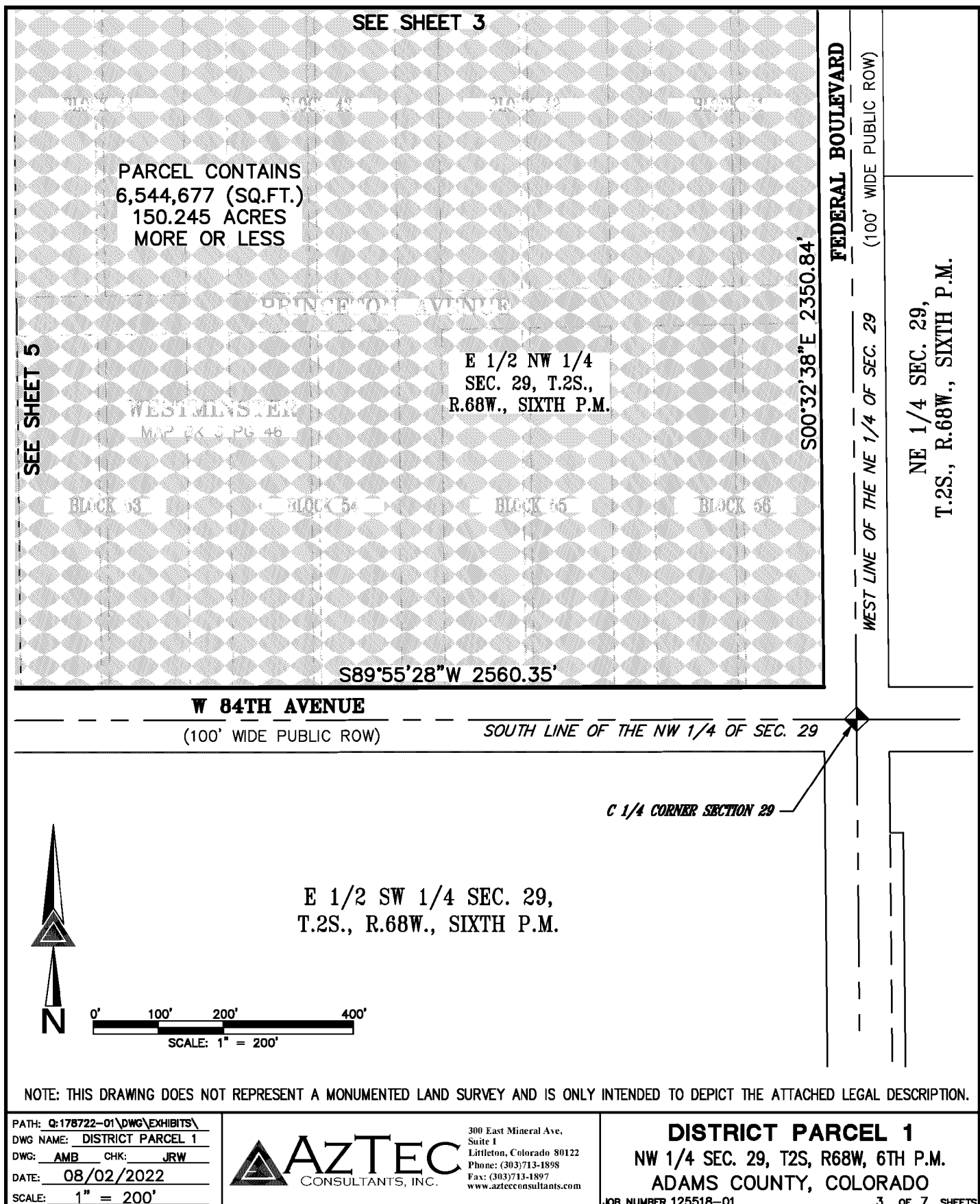
**300 East Mineral Ave,  
Suite 1  
Littleton, Colorado 80122  
Phone: (303)713-1898  
Fax: (303)713-1897  
[www.aztecconsultants.com](http://www.aztecconsultants.com)**

**DISTRICT PARCEL 1**  
NW 1/4 SEC. 29, T2S, R68W, 6TH P.M.  
ADAMS COUNTY, COLORADO

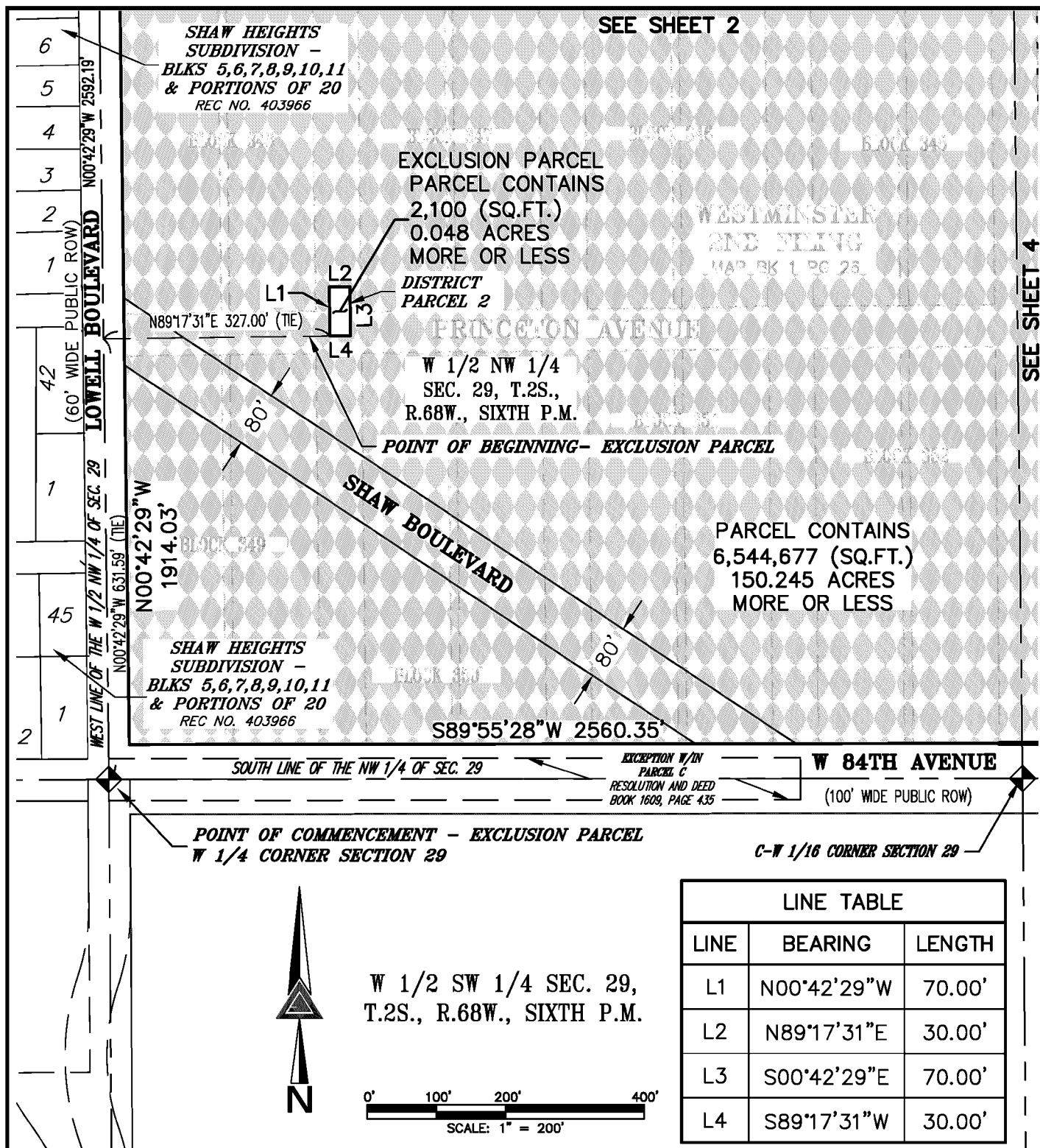
**JOB NUMBER 125518-01**

1 OF 7 SHEETS









PATH: Q:\178722-01\DWG\EXHIBITS\  
DWG NAME: DISTRICT PARCEL 1  
DWG: AMB CHK: JRW  
DATE: 08/02/2022  
SCALE: 1" = 200'

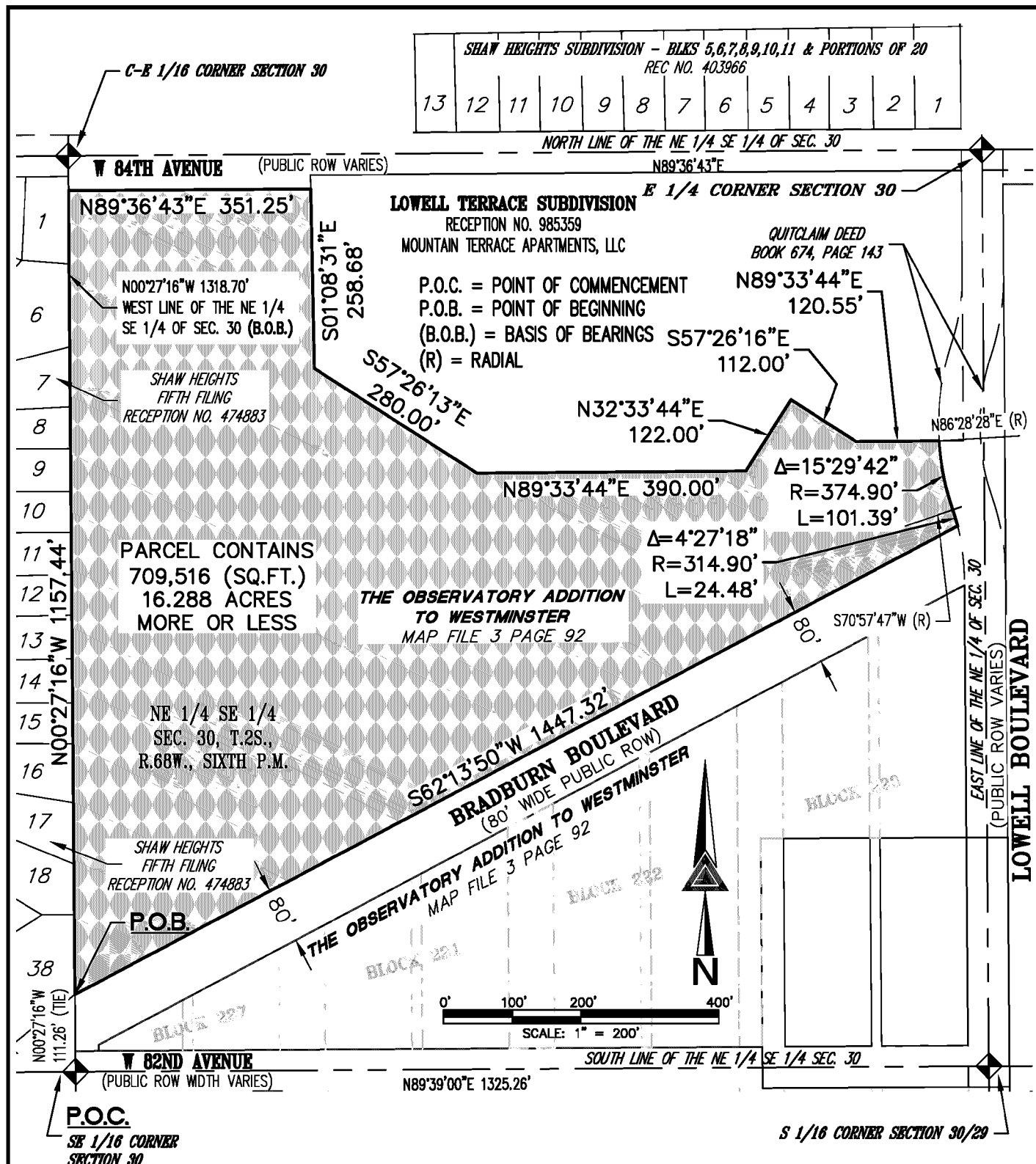


300 East Mineral Ave.  
Suite 1  
Littleton, Colorado 80122  
Phone: (303)713-1898  
Fax: (303)713-1897  
www.aztecconsultants.com

**DISTRICT PARCEL 1**  
**NW 1/4 SEC. 29, T2S, R68W, 6TH P.M.**  
**ADAMS COUNTY, COLORADO**

JOB NUMBER 125518-01

4 OF 7 SHEETS



NOTE: THIS DRAWING DOES NOT REPRESENT A MONUMENTED LAND SURVEY AND IS ONLY INTENDED TO DEPICT THE ATTACHED LEGAL DESCRIPTION.

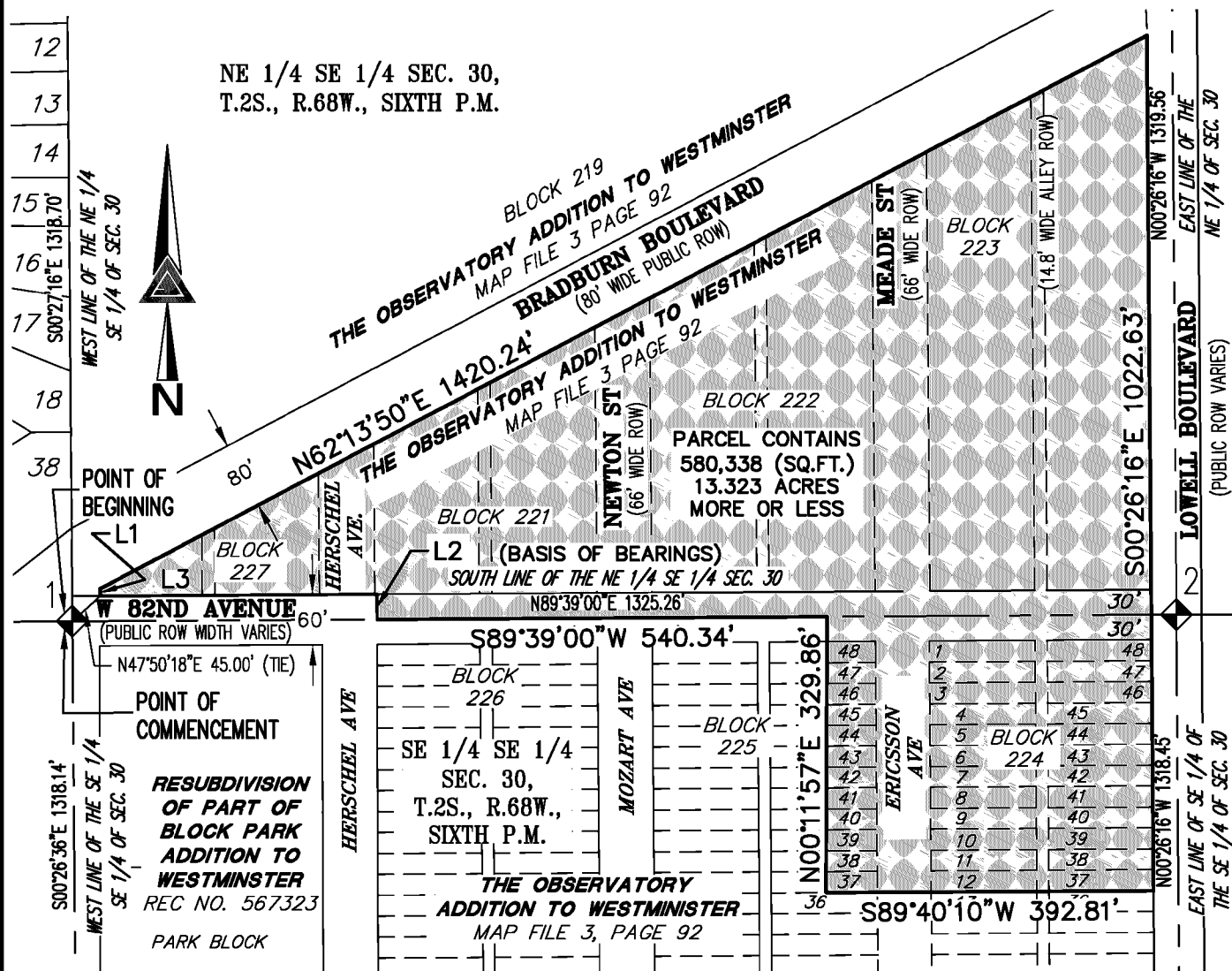
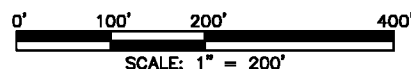
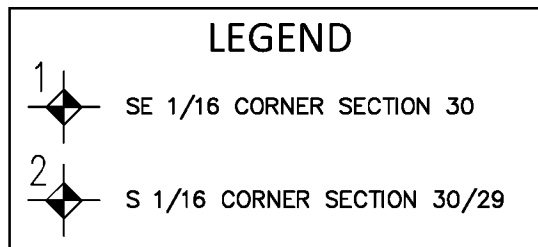
PATH: Q:\178722-01\DWG\EXHIBITS\  
DWG NAME: DISTRICT PARCEL 1  
DWG: AMB CHK: JRW  
DATE: 08/02/2022  
SCALE: 1" = 200'



300 East Mineral Ave,  
Suite 1  
Littleton, Colorado 80122  
Phone: (303)713-1898  
Fax: (303)713-1897  
www.aztecconsultants.com

**DISTRICT PARCEL 1**  
**NE 1/4 SE 1/4 SEC. 30, T.2S., R.68W., 6TH P.M.**  
**ADAMS COUNTY, COLORADO**  
JOB NUMBER 125518-01 5 OF 7 SHEETS

LINE TABLE		
LINE	BEARING	LENGTH
L1	N00°30'44"W	8.62'
L2	N00°12'09"W	30.00'
L3	S89°39'00"W	332.31'



NOTE: THIS DRAWING DOES NOT REPRESENT A MONUMENTED LAND SURVEY AND IS ONLY INTENDED TO DEPICT THE ATTACHED LEGAL DESCRIPTION.

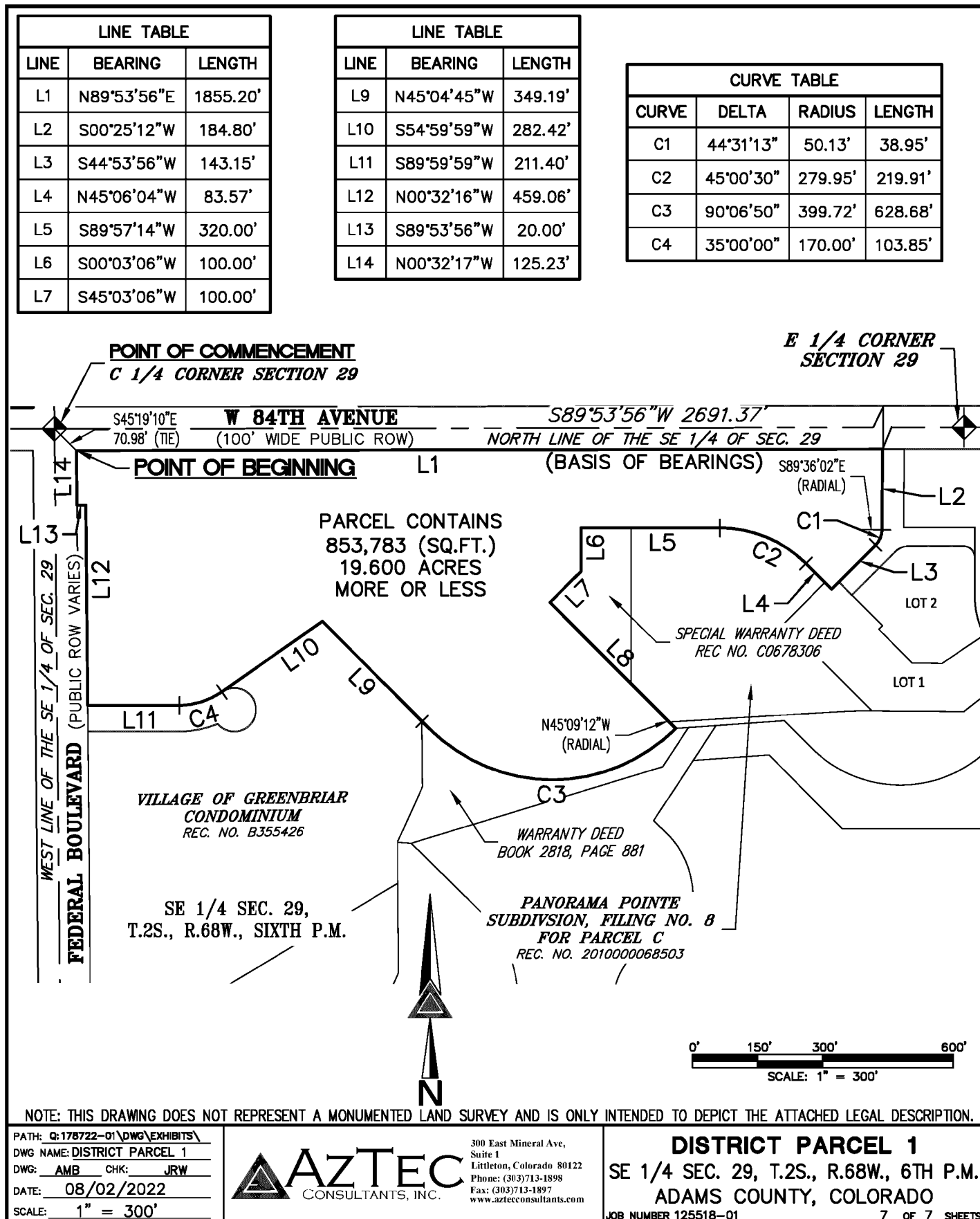
PATH: Q:\178722-01\DWG\EXHIBITS  
DWG NAME: DISTRICT PARCEL 1  
DWG: AMB CHK: JRW  
DATE: 08/02/2022  
SCALE: 1" = 200'



300 East Mineral Ave,  
Suite 1  
Littleton, Colorado 80122  
Phone: (303)713-1898  
Fax: (303)713-1897  
www.aztecconsultants.com

**DISTRICT PARCEL 1**  
NE 1/4 SE 1/4 SEC. 30, T2S, R68W, 6TH P.M.  
ADAMS COUNTY, COLORADO  
JOB NUMBER 125518-01 6 OF 7 SHEETS





PATH: Q:\178722-01\DWG\EXHIBITS\  
DWG NAME: DISTRICT PARCEL 1  
DWG: AMB CHK: JRW  
DATE: 08/02/2022  
SCALE: 1" = 300'



**AZTEC**  
CONSULTANTS, INC.

300 East Mineral Ave,  
Suite 1  
Littleton, Colorado 80122  
Phone: (303)713-1898  
Fax: (303)713-1897  
www.aztecconsultants.com

**DISTRICT PARCEL 1**  
**SE 1/4 SEC. 29, T.2S., R.68W., 6TH P.M.**  
**ADAMS COUNTY, COLORADO**  
JOB NUMBER 125518-01 7 OF 7 SHEETS